



**Kelley 2" ribbed panel steel sectional doors are versatile industry workhorses.** These open-back commercial steel doors are available in a variety of steel gauges and feature tongue and groove construction with a bottom weather seal to guard against the elements. These doors can be factory- or field-modified with CFC-free polystyrene insulation to fit the needed application.



Kelley KP2512

**CONSTRUCTION**

**Kelley KP2002/KP2012/KE2022**

Extra Heavy-duty, 20-gauge steel

**Kelley KP2402/KP2412/KE2422**

Heavy-duty, 24-gauge steel

**Kelley KP2502/KP2512**

Medium-duty, nominal 24-gauge steel

**SINGLE-LAYER Steel**

Available in KP2002/KP2402/KP2502



R-Value 6.64

**DOUBLE-LAYER Steel + Insulation**

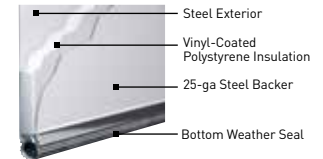
Available in KP2012/KP2412/KP2512



R-Value 6.64

**TRIPLE-LAYER Steel + Insulation + Steel Backer**

Available in KE2022/KE2422



**Track:** All doors are available with both 2" or 3" track in Standard Lift, High Lift, Vertical Lift, Low Headroom, and Follow the Roof Pitch. Custom track configurations are also available. For drawings and more information, please visit [www.kelleyentrematic.com](http://www.kelleyentrematic.com).

**Springs:** Torsion springs are oil tempered, helical wound and custom computed for each door for a minimum 10,000 cycle life. Optional springs are available up to 100,000 cycle life.

**Hardware:** Hardware includes minimum 14-gauge galvanized steel hinges and 13-gauge galvanized steel track brackets. All rollers have minimum 10-ball bearings.

**SPECIFICATIONS**

	Extra Heavy-duty			Heavy-duty			Medium-duty	
	Kelley KP2002	Kelley KP2012	Kelley KE2022	Kelley KP2402	Kelley KP2412	Kelley KE2422	Kelley KP2502	Kelley KP2512
<b>STEEL THICKNESS (Front/Back)</b>	20-ga	20-ga	20-ga / 25-ga	24-ga	24-ga	24-ga / 25-ga	Nominal 24-ga	Nominal 24-ga
<b>PANEL DESIGN</b>	Deep Ribbed	Deep Ribbed	Deep Ribbed	Deep Ribbed	Deep Ribbed	Deep Ribbed	Deep Ribbed	Deep Ribbed
<b>STEEL EMBOSMENT</b>	Smooth	Smooth	Smooth	Smooth	Smooth	Smooth	Smooth	Smooth
<b>DOOR THICKNESS</b>	2" (5.1cm)	2" (5.1cm)	2" (5.1cm)	2" (5.1cm)	2" (5.1cm)	2" (5.1cm)	2" (5.1cm)	2" (5.1cm)
<b>CONSTRUCTION LAYERS</b>	Single	Double	Triple	Single	Double	Triple	Single	Double
<b>INSULATION<sup>1</sup></b>		Polystyrene	Polystyrene		Polystyrene	Polystyrene		Polystyrene
<b>R-VALUE<sup>2</sup></b>		6.4	6.4		6.4	6.4		6.4
<b>MINIMUM WIDTH</b>	6'	6'	6'	6'	6'	6'	6'	6'
<b>MAXIMUM WIDTH</b>	26' 2"	26' 2"	26' 2"	30' 2"	30' 2"	30' 2"	20' 2"	20' 2"
<b>MINIMUM HEIGHT</b>	7'	7'	7'	7'	7'	7'	7'	7'
<b>MAXIMUM HEIGHT</b>	24' 1"	24' 1"	24' 1"	24' 1"	24' 1"	24' 1"	14' 1"	14' 1"
<b>WIND LOAD<sup>3</sup> AVAILABLE</b>	•	•	•	•	•	•	•	•
<b>PAINT FINISH WARRANTY<sup>4</sup></b>	10 Years	10 Years	10 Years	10 Years	10 Years	10 Years	10 Years	10 Years
<b>WORKMANSHIP/HARDWARE WARRANTY<sup>4</sup></b>	1 Year	1 Year	1 Year	1 Year	1 Year	1 Year	1 Year	1 Year

<sup>1</sup> Insulation has passed self-ignition, flamespread and smoke developed index fire testing.

<sup>2</sup> Calculated door section R-value is in accordance with DASMA TDS-163.

<sup>3</sup> It is your responsibility to make sure your garage door meets local building codes.

<sup>4</sup> For complete warranty details, visit [kelleyentrematic.com](http://kelleyentrematic.com) or contact your local Kelley dealer.

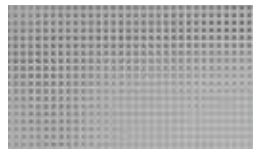
**PANEL OPTIONS**



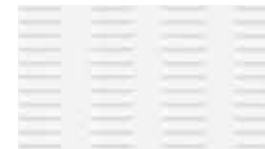
RIBBED PANEL



ALUMINUM FULL VIEW\*



PERFORATED ALUMINUM†  
0.312" square perforations on 1/2" centers



LOUVERED ALUMINUM\*  
7 columns of (12) 3"x 3/4" vents on a 4' x 24" panel

†Mill finish only. Custom powder coat available Summer 2015

\*Available in all Aluminum color options

**STEEL COLORS**

Kelley steel doors are pre-painted for custom colors, exterior latex paint must be used. Visit [kelleyentrematic.com](http://kelleyentrematic.com) for instructions on painting. Actual paint colors may vary from samples shown.



COMMERCIAL WHITE



COMMERCIAL BROWN  
KP2402/KP2412/KE2422



COMMERCIAL BLACK  
KP2402/KP2412/KE2422

**ALUMINUM COLORS**

Actual color may vary from sample shown.



CLEAR ANODIZED



ANODIZED DARK BRONZE



ANODIZED BLACK



WHITE POWDER COAT

**WINDOW OPTIONS**



24" X 12" SINGLE PLEXIGLAS®  
24" X 12" INSULATED PLEXIGLAS®



24" X 6" DSB or PLEXIGLAS®

Available with either a black or white frame.

**ENTREMATIC**

Entrematic  
165 Carriage Court  
Winston-Salem, NC 27105  
800.558.6960  
[www.kelleyentrematic.com](http://www.kelleyentrematic.com)



Entrematic reserves the right to change specifications and designs without notice and without incurring obligations. Entrematic products may be the subject of one or more U.S. and/or foreign, issued and/or pending, design and/or utility patents. Kelley as word and logo are registered trademarks belonging to Entrematic Group AB or other companies controlled by the same organization. All rights reserved.

©Entrematic Group AB 2015. All rights reserved. Printed in USA Form # KSS-2SSD-1015