

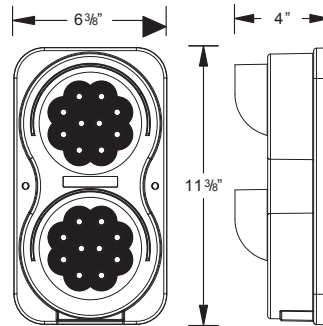
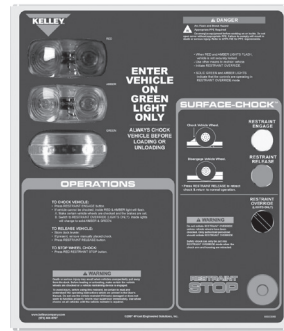
SURFACE CHOCK™

SURFACE - MOUNTED WHEEL RESTRAINT SPECIFICATIONS



Design Highlights

- Surface Mount Design
- Push-button Control
- Compatible with "Pup" & "Lift Gate" Trailers
- LED Interior & Exterior Communication Lights
- Automatic Wheel Sensing
- Remote Pump & Motor with Wall Mount Bracket
- Programmable Controller
- Integral Truck Positioning Guide Rail
- Hot Dip Galvanized Finish
- Manual Release for Power Failure



Project Information

Job Name _____
 Address _____
 General Contractor _____
 Distributor _____
 Quantity _____

Certified For Construction

By _____
 Company _____
 Address _____
 Date _____

Available Options

- Electric De-icing system (heater kit)
- Exterior wall mounted emergency stop
- Additional guide rail system
- Extended Length Hydraulic Hoses
- Other _____

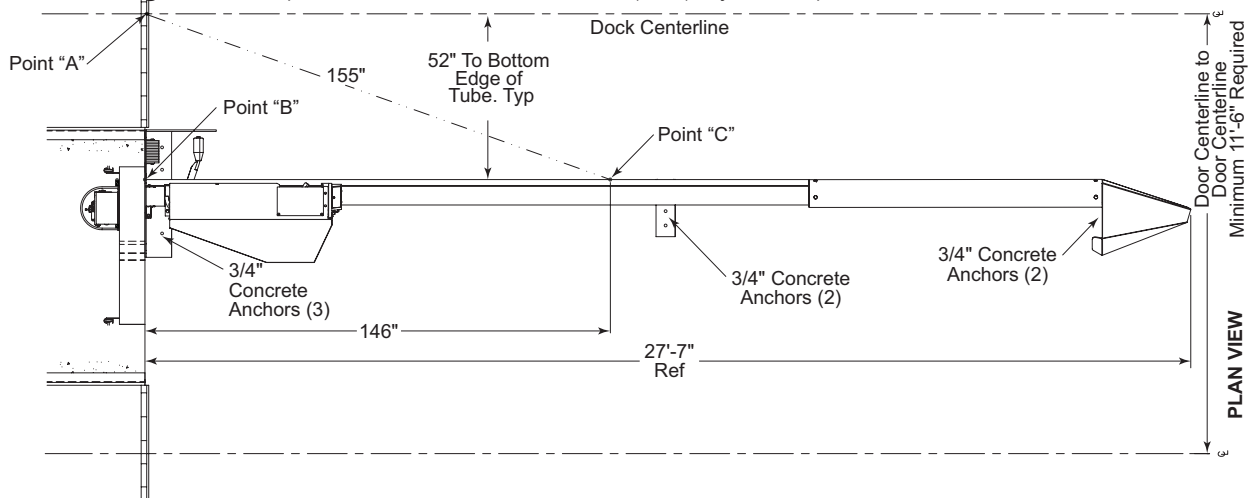
Accessories

- Control Panel Stanchion
- Combination Control Panel
- Master Control Panel
- Other _____

SURFACE CHOCK™

SURFACE-MOUNTED WHEEL RESTRAINT SPECIFICATIONS

- General:** SURFACE CHOCK is a surface mounted wheel chocking device designed to chock the wheel of a truck or trailer and restrain it at the loading dock. To be hydraulically operated with NEMA 12 control panel. Available in all single and three phase voltages. Unit to be drive mounted with 4" ground clearance and operates in extreme weather conditions including snow and flooded driveways. The SURFACE CHOCK includes operating controls and remote-mounted hydraulic power pack located inside the building along with an interior and exterior visual communication system.
- Construction:** Strong welded steel construction with tubular steel guide rail mounted to driveway. Entire unit hot-dip galvanized finish.
- Operation:** The truck is backed into position against the dock bumpers and the brakes are set. The dockworker pushes the RESTRAINT ENGAGE button on the control panel to activate the SURFACE CHOCK. When activated, the outside lights immediately change from green to red. When the sensing roller contacts the rear truck wheel, the chock arm will extend out of the housing until it is placed in front of the rear wheel. The chock housing will then reverse and move the chock arm back to firmly engage the wheel and the inside lights will change from red to green. When loading/unloading is complete, the dockworker pushes the release button on the control panel to disengage the SURFACE CHOCK. The inside light will immediately change from green to red, the chock arm is retracted and the housing begins to reverse back toward the dock wall. When the SURFACE CHOCK reaches its stored position, the outside lights will change from red to green. Pressing the RESTRAINT RELEASE button at any time will stop the restraint in any position.
- Control Panel:** Solid state control panel (14"W x 16" H x 6" D) features programmable logic controls and "real time" diagnostic capability, industrial quality push buttons, integral LED visual safety light warning system and printed operational instructions.
- Capture Range:** Captures rear wheel of transport vehicle for any axle position from 32 inches to 14 feet from dock face.
- Communications:** The communication system consists of printed operating instructions on the control panel, an outside mounted instruction sign for the truck driver, and internal and external visual communication lights.
- Exterior lights:** Low profile, compact exterior light (6-3/8" W x 11-3/8"H x 4"D) with flashing green and red LED signals indicate safe or unsafe conditions for trailer movement. Caution sign (9"W x 24"H) with standard and reversed lettering provided with exterior light.
- Electrical:** Control panel for SURFACE CHOCK available in all single and three phase voltages. Interior and exterior LED communication lights operate on a 24V circuit.
- Hydraulic Specifications:** Unit to include 3/2 GPM pump (two speed) and 1HP motor available in all single and three phase voltages, double-acting cylinder with 144" stroke and a hydraulic reservoir with 3 gallon usable capacity. Hydraulic hoses and fittings provided.
- Installation:** Requires mounting restraint, control panel, exterior lights, and sign in strict accordance with KELLEY installation instructions. Restraint and exterior lights must be wired to control panel. Restraint, control panel, and exterior lights to be electrically installed by others. Installation is recommended to be performed only by authorized KELLEY Distributors. Installation is not included unless specifically contracted for with KELLEY Distributor.
- Limited Warranty:** KELLEY warrants all components to be free from defects in material and workmanship, under normal use, for a one year base period from the date of shipment in accordance with KELLEY's Standard Warranty Policy. The "Base Warranty Period" will begin on the completion of installation or the sixtieth (60th) day after shipment, whichever is earlier.



KELLEY

1612 Hutton Drive, Suite 140 ▾ Carrollton, TX 75006, USA ▾ Tel: 800-558-6960 ▾ Fax: 972-389-4766 ▾ Email: sales@kelleycompany.com ▾ www.kelleycompany.com
A continuing research program is in effect at Kelley. We reserve the right to incorporate product improvement at any time without prior notice.

© 2011 4Front Engineered Solutions, Inc.

Form # KPS-VWSM-0911