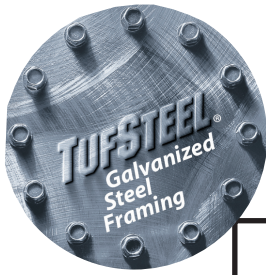
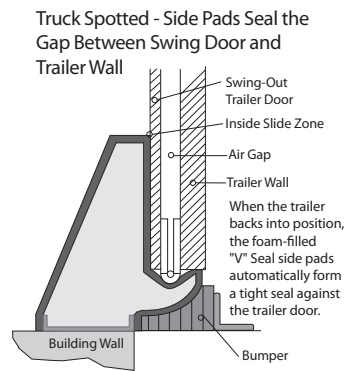
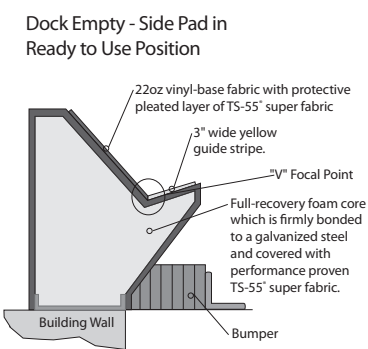


V-SERIES SPECIFICATIONS



Design Highlights

- V-shaped side pads provide better trailer access and seal hinge gaps on trailer swing-out doors
- Fixed-foam head pad seals gap between top of trailer and building wall
- 22oz vinyl-base fabric with protective pleated layer of TS-55® Super Fabric in critical wear areas provides exceptional wear resistance
- Full-length yellow stripes guide drivers to the dock
- Roll-formed galvanized steel framing reduces pressure on building wall
- 3-inch inside bottom flaps provide extra protection against outside elements



Project Information

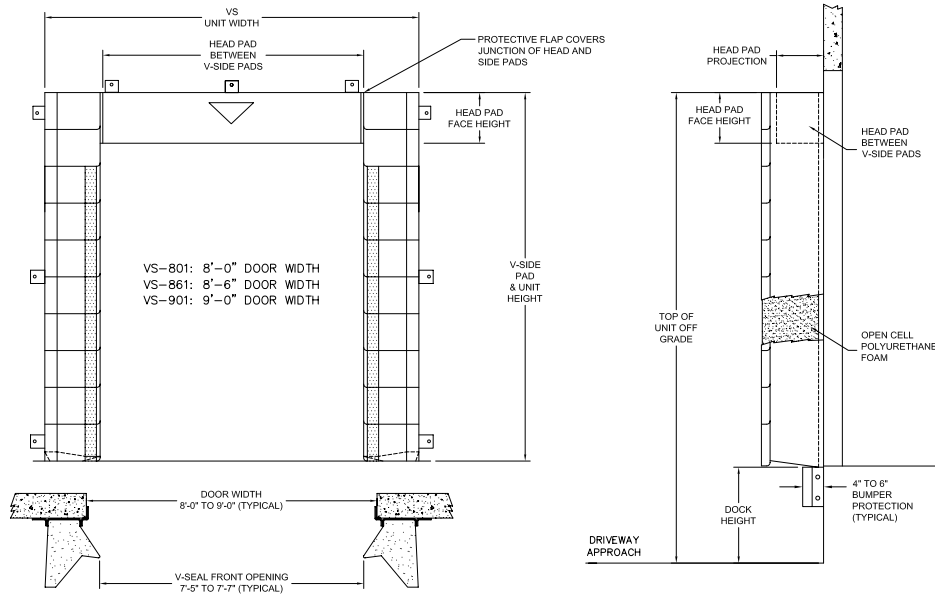
Job Name _____
 Address _____
 General Contractor _____
 Distributor _____
 Quantity _____

Certified For Construction

By _____
 Company _____
 Address _____
 Date _____

V-SEAL HEAD PAD DOCK SEAL

V
S
E
R
I
E
S
S
P
E
C
I
F
I
C
A
T
I
O
N
S



APPLICATION DATA

Door Width: _____ ft. _____ in.
 Door Height: _____ ft. _____ in.
 Dock Height: _____ ft. _____ in.
 Bumper Protection*: _____ in.
 (*Includes bumper projection and any building wall/
 foundation offset or cantilever)

TRUCKS AND TRAILERS SERVICED

Width: _____ Max. _____ Min.
 Height: _____ Max. _____ Min.
 Length: _____ Max. _____ Min.
 Hydraulic Tailgate: Yes No
 Rear Step Section: Yes No
 Tailgate/Step Section Size: _____ In.
 Yard Jockeys: Yes No

QUANTITY _____

Model VS-801 (For 8'-0" Wide Doors) VS-861 (For 8'-6" Wide Doors) VS-902 (For 9'-0" Wide Doors)

Unit Width 114" (VS-801) 120" (VS-861) 123" (VS-902)

Head Pad Back/Face 12/12 18/18 12/18 WearMaster® Head Pad

Drop Curtain None 12" 18" 24" Hook-loop

Unit Height _____ " = (Door height + Head pad back height - Typical)

Base Material 22oz Vinyl Base Fabric with TS-55® Wear Pleats in Critical Wear Areas

Color Black Tan Brown Blue Green

Wood Blockout None Tapered Non-Tapered

Blockout Top Projection 0" 2" 4" 6" 8" 10" 12" _____"

Blockout Bottom Projection 0" 2" 4" 6" 8" 10" 12" _____"

Foam Blockout None Tapered Non-Tapered

Blockout Top Projection 0" 2" 4"

Blockout Bottom Projection 0" 2" 4"

Head Pad Wear Face None Yes

22oz Vinyl 40oz Vinyl 40oz CSM TS-55®

Black Tan Brown Blue Green

Bottom Flaps (3" Inside Flaps are Standard) 6" Inside _____" (Up to 12")

Options Door Numbers

Flame Retardant Fabric & Foam

Flame Retardant Fabric Only Flame Retardant Foam Only

Side Pad Mounting Brackets Flats & Angles (VS-902) Angles

1 1/2" Offsets & Angles (VS-801 & VS-861)

*Note: Consult factory for blockout application assistance.

*Conversions: To convert measurements to metric, see formulas below:

Inches x 25.4 = millimeters (Example: 4" x 25.4 = 101.6 mm)

Feet x .3048 = meters (Example: 12' x .3048 = 3.66 m)

