



L-PAD HOOD CURTAIN DOCK SEAL

D S H L S E R I E S S P E C I F I C A T I O N S

Design Highlights

- Provides positive seal between internal and external environments
- Endurance-tested foam core is continuously bonded to frame surface with flexible, nonflammable adhesive
- Top of hood is tapered forward and supported with thick wall aluminum pipe
- Hood curtain splits offer load relief and higher clearance
- Highly resilient, open-celled polyurethane foam compresses easily to extend seal life
- Roll-formed galvanized steel framing reduces pressure on building wall
- L-shaped sides compress around side of trailer to create a seal providing full width trailer access
- All pads are vented for air and moisture release
- Full length yellow stripes guide
- Heavy-duty, galvanized steel mounting brackets included

Project Information

Job Name _____
 Address _____
 General Contractor _____
 Distributor _____
 Quantity _____

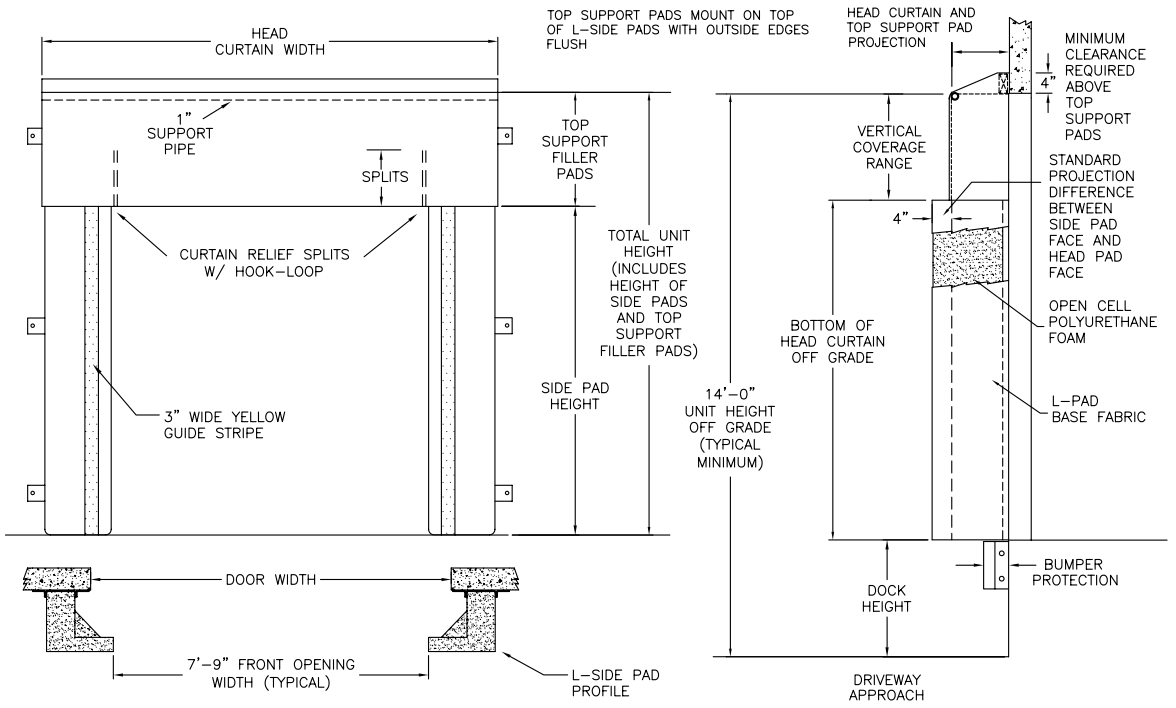
Certified For Construction

By _____
 Company _____
 Address _____
 Date _____



L-PAD HOOD CURTAIN DOCK SEAL

SPECIFICATIONS



APPLICATION DATA

Door Width: _____ ft. _____ in.
 Door Height: _____ ft. _____ in.
 Dock Height: _____ ft. _____ in.
 Bumper Protection*: _____ in.
 (*Includes bumper projection and any building wall/ foundation offset or cantilever)

TRUCKS AND TRAILERS SERVICED

Width: _____ Max. _____ Min.
 Height: _____ Max. _____ Min.
 Length: _____ Max. _____ Min.
 Hydraulic Tailgate: Yes No
 Rear Step Section: Yes No
 Tailgate/Step Section Size: _____ In.
 Yard Jockeys: Yes No

- QUANTITY** _____ **Model** DSHL
- Framing** Roll Formed Galvanized Steel
- Head Curtain Width** 129" for 9'6" door widths or smaller 135" for 9'7" to 10'0" door widths
- Head Curtain Drop** 18" 24" 30" 36" 42" 48" _____"
- Head Curtain Splits** 18" 24" 30" 36" No Split
- Side Pad Height** _____ (Total Unit Height)
- Side Pad Face** 18" for 9'6" door widths or smaller 21" for 9'7" to 10'0" door widths
- Base Material** 22 oz. Vinyl 40 oz. Vinyl 16 oz. CSM 40 oz. CSM TS-55®
- Color** Black Tan Brown Blue Green
- Taper** Tapered Non-Tapered
- Top Projection** 16" 18" 20" 22" 24" _____"
- Bottom Projection** 16" 18" 20" 22" 24" _____"
- Blockout** None Top Projection _____" Bottom Projection _____"
- Wear Face** None Hood Side Pad Tip of "L" (TS-55®)
- Material** 22 oz. Vinyl 40 oz. Vinyl 40 oz. CSM TS-55®
- Color** Black Tan Brown Blue Green
- Wear Pleats** None WP4 WP8 WP16 Side Pads Head Pad Corners
- Material** 22 oz. Vinyl 40 oz. Vinyl 40 oz. CSM TS-55®
- Color** Black Tan Brown Blue Green
- Options** Door Numbers Flame Retardant Fabric & Foam Flame Retardant Fabric Only
- Side Pad Mounting Brackets** None Flats & Angles Angles
 1 1/2" Offset Flats & Angles

*Conversions: To convert measurements to metric, see formulas below:
 Inches x 25.4 = millimeters (Example: 4" x 25.4 = 101.6 mm)
 Feet x .3048 = meters (Example: 12' x .3048 = 3.66 m)

