



# FOAM DOCK SEAL WITH ADJUSTABLE HEAD PAD

D S A S E R I E S S P E C I F I C A T I O N S

## Design Highlights

- Adjustable Head Pad System Has 48" Working Range To Accommodate Varying Truck Heights
- 18" High Foam Head Pad is Mounted on 10 ga. Formed, Painted Steel Which Travels in Slide Tracks
- Adjustable Spring-Tension System Provides for Adjustment of Counterbalance and Horizontal Tilt for Smooth, Jam-Free Operation
- Endurance-Tested Foam Core is Continuously Bonded to Frame Surface with Flexible, Nonflammable Adhesive.
- Roll-formed galvanized steel framing reduces pressure on building wall
- A Wide Selection of Durable Coated Fabrics Provide Maximum Durability
- Highly Resilient, Open-Celled Polyurethane Foam Keeps Original Shape and Compresses Easily to Extend Seal Life
- Side Pad Bottoms are Tapered to Avoid Pinching and Wear
- All Pads are Vented for Air and Moisture Release
- Full Length Yellow Stripes Guide Drivers to the Dock
- Heavy-Duty, Galvanized Steel Mounting Brackets Included

## Project Information

Job Name \_\_\_\_\_  
 Address \_\_\_\_\_  
 General Contractor \_\_\_\_\_  
 Distributor \_\_\_\_\_  
 Quantity \_\_\_\_\_

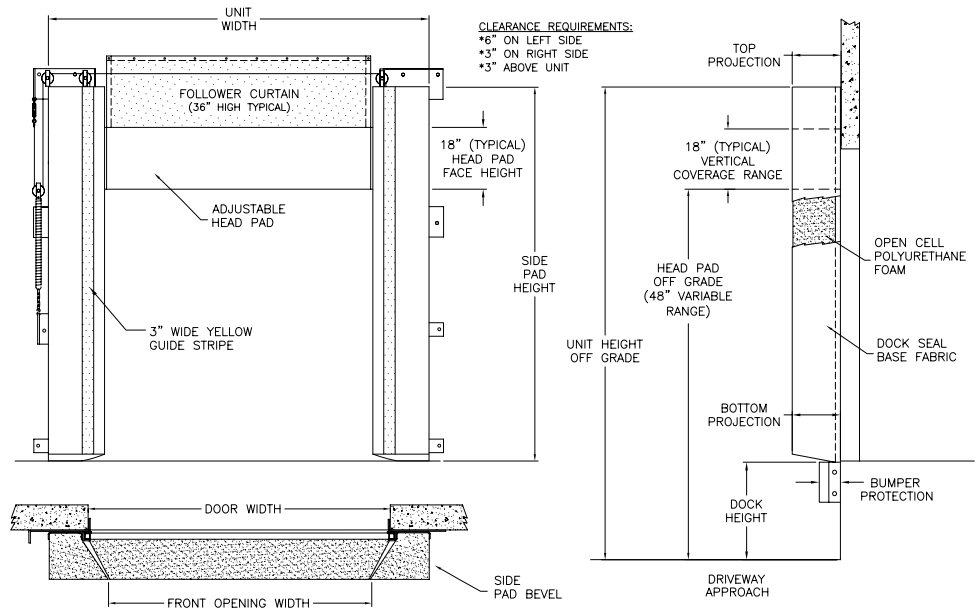
## Certified For Construction

By \_\_\_\_\_  
 Company \_\_\_\_\_  
 Address \_\_\_\_\_  
 Date \_\_\_\_\_



# FOAM DOCK SEAL WITH ADJUSTABLE HEAD PAD

## DSASERIES SPECIFICATIONS



### APPLICATION DATA

Door Width: \_\_\_\_\_ ft. \_\_\_\_\_ in.  
 Door Height: \_\_\_\_\_ ft. \_\_\_\_\_ in.  
 Dock Height: \_\_\_\_\_ ft. \_\_\_\_\_ in.  
 Bumper Protection\*: \_\_\_\_\_ in.  
 (\*Includes bumper projection and any building wall/  
 foundation offset or cantilever)

### TRUCKS AND TRAILERS SERVICED

Width: \_\_\_\_\_ Max. \_\_\_\_\_ Min.  
 Height: \_\_\_\_\_ Max. \_\_\_\_\_ Min.  
 Length: \_\_\_\_\_ Max. \_\_\_\_\_ Min.  
 Hydraulic Tailgate:  Yes  No  
 Rear Step Section:  Yes  No  
 Tailgate/Step Section Size: \_\_\_\_\_ In.  
 Yard Jockeys:  Yes  No

### QUANTITY \_\_\_\_\_

Model  DSA

Distance to Outside of Side Pads \_\_\_\_\_ (Total Inches)

Side Pad Height \_\_\_\_\_ (Total Inches)

Side Pad Bevel  12/12  6/10  8/12  10/15  8/15  12/15  10/18  6/14

Head Pad Bevel  18/18

Base Material  22 oz. Vinyl  40 oz. Vinyl  16 oz. CSM  40 oz. CSM  TS-55®

Color  Black  Tan  Brown  Blue  Green

Taper  Tapered  Non-Tapered

Top Projection  8"  10"  12"  14"  16"  18"  20"  22"  24"

Bottom Projection  8"  10"  12"  14"  16"  18"  20"  22"  24"

Bottom Flaps  None  3"  6"  Inside  Inside & Front  All 3 Sides

Wear Surface  None  Wear Face  Reinforced Inside Face  Side Pad 4"

Side Pad  Head Pad

Material  22 oz. Vinyl  40 oz. Vinyl  40 oz. CSM  TS-55®

Color  Black  Tan  Brown  Blue  Green

Wear Pleats  None  WP4  WP8  WP16  Side Pads

Material  22 oz. Vinyl  40 oz. Vinyl  40 oz. CSM  TS-55®

Color  Black  Tan  Brown  Blue  Green

Options  Door Numbers

Flame Retardant Fabric & Foam

Flame Retardant Fabric Only  Flame Retardant Foam Only

Side Pad Mounting Brackets  None  Flats & Angles  Angles

1 1/2" Offsets & Angles

\*Conversions: To convert measurements to metric, see formulas below:

Inches x 25.4 = millimeters (Example: 4" x 25.4 = 101.6 mm)

Feet x .3048 = meters (Example: 12' x .3048 = 3.66 m)

