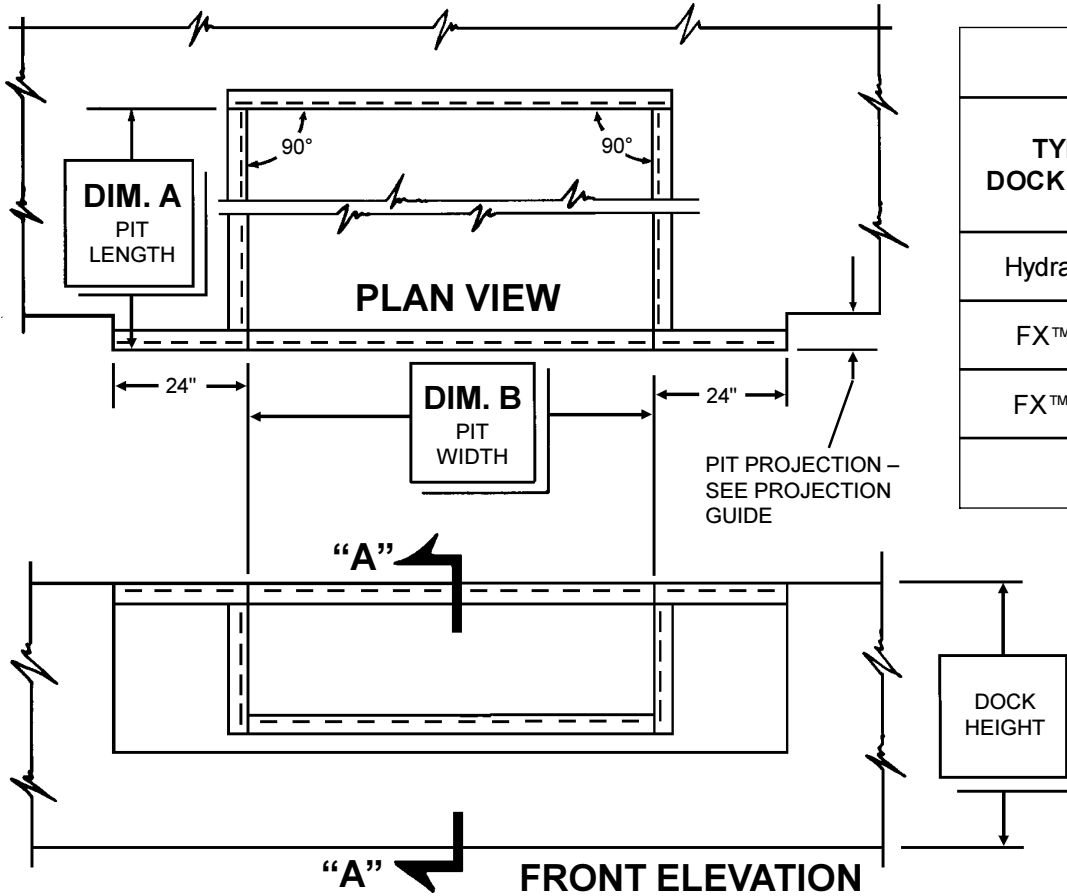


CANTILEVERED PIT DETAILS

NOTE: This drawing is to be only used for dimensions covering the cantilevered pit projection. See Pit Print Table below for individual pit print publication numbers that contain additional pit and curb angle specifications.



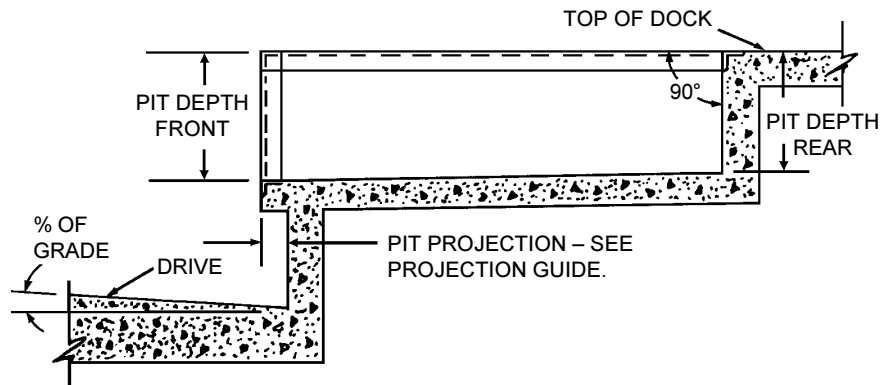
PIT PRINT TABLE	
TYPE OF DOCKLEVELER	PIT PRINT PUBLICATION NUMBER
Hydraulic "HP"	5568
FX™ Straight	5563
FX™ Tapered	5566

PIT PROJECTION GUIDE

% Grade	Pit Projection	Bumper Projection	Total Projection
1	1"	4"	5"
2	2"	4"	6"
3	3"	4"	7"
4	4"	4"	8"
5	5"	4"	9"
6	6"	4"	10"
7	7"	4"	11"
8	8"	4"	12"
9	9"	4"	13"
10	10"	4"	14"

NOTE: If metal or decorative facing is used, add an extra inch of pit projection for every inch of facing projection.

SECTION "A-A"



NOTE: IF PIT PROJECTS MORE THAN 4", CONCRETE SPECIFICATIONS SHOULD BE REVIEWED WITH QUALIFIED STRUCTURAL ENGINEER.



KELLEY DOCK SYSTEMS
 6720 N. Teutonia Ave. • Milwaukee, WI 53209-0993
 Phone: (414) 352-1000 • Fax: (414) 342-2093