

INFLATABLE RAIL SHELTER

K I - 3 1 0 S E R I E S S P E C I F I C A T I O N S



Design Highlights

- Top, Side and Optional Bottom Air Chambers Constructed from Durable 10 oz./sq. yd. Vinyl-coated Fabric
- Provides Excellent Sealing for a Wide Variety of Rail Cars and Rail Applications
- Conforms to Irregularities Present on the Side of Some Rail Cars
- Inflated by a High Volume, Low Pressure Motor
- Unit Retraction Assisted by Upward Biased Track-trolley Support System
- Can be Sized to Accommodate a Variety of Rail Ramp Configurations



Project Information

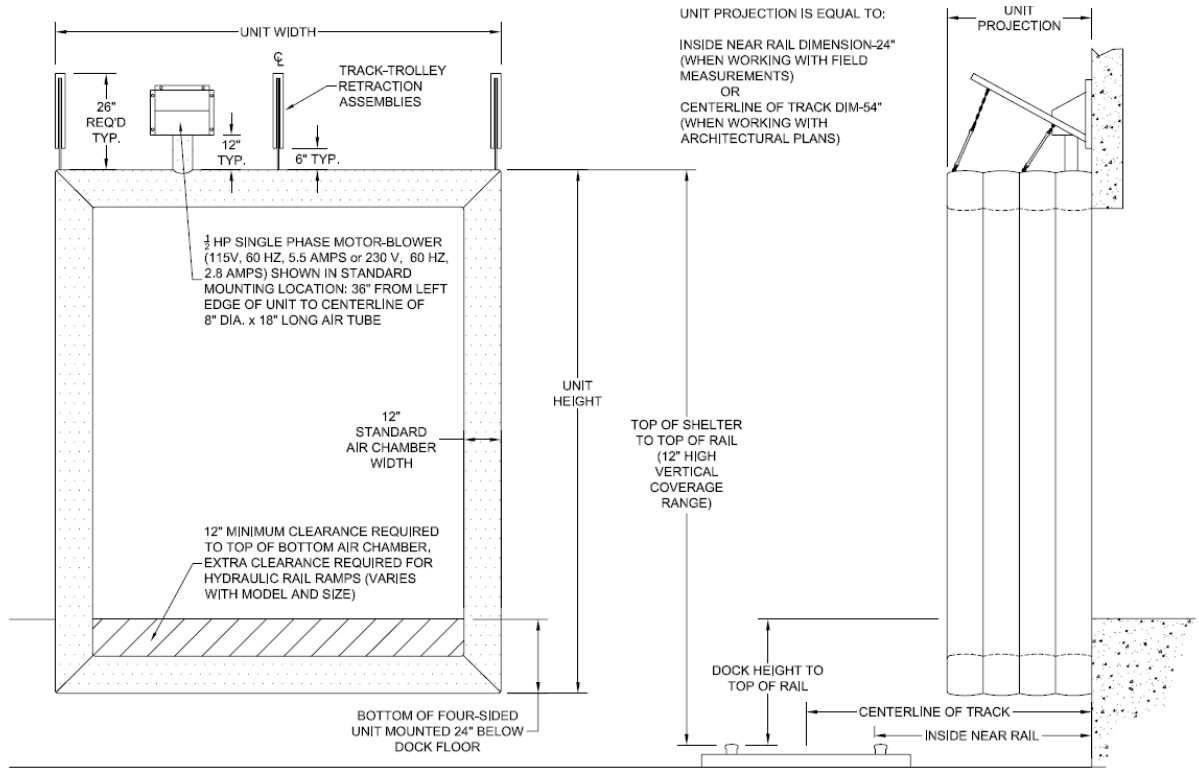
Job Name _____
Address _____
General Contractor _____
Distributor _____
Quantity _____

Certified For Construction

By _____
Company _____
Address _____
Date _____

INFLATABLE RAIL SHELTER

SPECIFICATIONS



APPLICATION DATA

Door Width: _____ ft. _____ in.
 Door Height: _____ ft. _____ in.
 Dock Height off top of rail: _____ ft. _____ in.
 Dock to Inside Near Rail: _____ in. (when using field measurements)
 Dock to Centerline of Track: _____ in. (when using architectural plans)
 Quantity _____

Please check box from each category

Complete Unit Parts Only (Indicate Parts Required. For Replacement Air Bag, Specify Air Inlet Tube Location.)

Model: KI-310-3 (3-Sided Cover and Frame) KI-310-4 (4-Sided Cover and Frame)

(KI-310 4-sided unit: size so that bottom can be mounted 24" below dock floor while maintaining top coverage range.)

Standard Frame: 2" X 12" Pressure Treated Wood Framing

Motor/blower: 1/2 HP, 115V, 50/60 Hz, 5.5 Amps (Switch w/pilot light included)

(Motor can be wired for 220V, 1Ph, 50/60 Hz, 2.8 Amps)

Standard Single Motor/blower

Optional Two Motor/blowers (Required when total volume of shelter exceeds 275 cubic feet.)

None

Air Inlet Tube Location: Standard Top Left Center Top Right Specify

Unit Width: 12'-0" 13'-0" 14'-0" 15'-0" 16'-0" 17'-0" 18'-0" _____"

(Add 24" to door width to determine unit width, minimum width is 12'-0")

Unit Height: 12'-0" 13'-0" 14'-0" 15'-0" 16'-0" _____"

(Standard minimum unit height for 4-sided unit is 13'-0")

Projection: 48" 54" 60" 66" 72" 78" 84" _____"

Air Bag Fabric/Color: Black 10oz Vinyl

Optional Head Curt Drop: 48" 54" 60" 66" 72" 78" 84" _____"

*Conversions: To convert measurements to metric, see formulas below:

Inches x 25.4 = millimeters (Example: 4" x 25.4 = 101.6 mm)

Feet x .3048 = meters (Example: 12' x .3048 = 3.66 m)

