



# FOAM DOCK SEAL WITH HEAD PAD

D  
S  
S  
S  
E  
R  
I  
E  
S  
S  
P  
E  
C  
I  
F  
I  
C  
A  
T  
I  
O  
N  
S

## Design Highlights

- Provides a Positive Seal Between Internal and External Environments.
- Prevents the Passage of Dust, Insects, Exhaust Fumes and Other Airborne Particulate Matter While the Loading Dock is In Use
- Roll-Formed, Galvanized Steel Framing
- Endurance Tested Foam Core is Continuously Bonded to Frame Surface with Flexible, Nonflammable Adhesive
- A Wide Selection of Durable Coated Fabrics Provide Maximum Durability
- Highly Resilient, Open-Cellled Polyurethane Foam Keeps Original Shape and Compresses Easily to Extend the Seal Life
- Side Pad Bottoms are Tapered to Avoid Pinching and Wear
- All Pads are Vented for Air and Moisture Release
- Full Length Yellow Stripes Guide Drivers to the Dock
- Heavy-Duty, Galvanized Steel Mounting Brackets Included

## Project Information

Job Name \_\_\_\_\_  
 Address \_\_\_\_\_  
 General Contractor \_\_\_\_\_  
 Distributor \_\_\_\_\_  
 Quantity \_\_\_\_\_

## Certified For Construction

By \_\_\_\_\_  
 Company \_\_\_\_\_  
 Address \_\_\_\_\_  
 Date \_\_\_\_\_



# FOAM DOCK SEAL WITH HEAD PAD

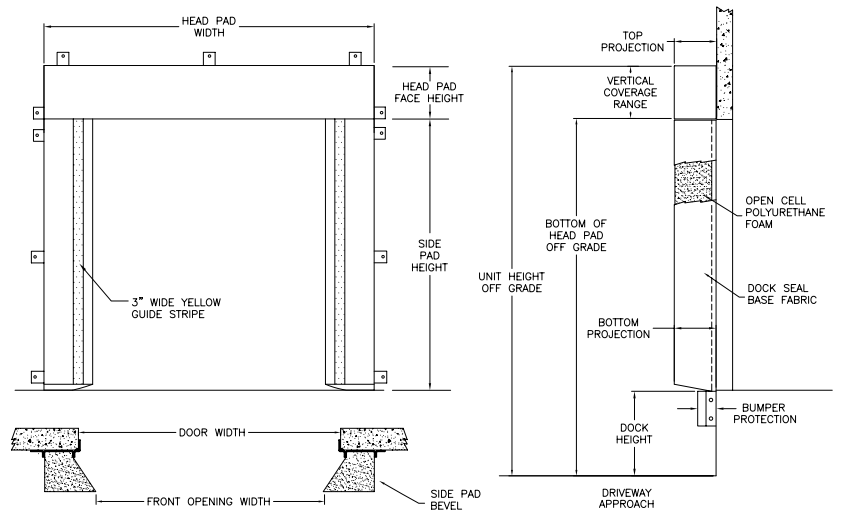
## D S S S E R I E S S P E C I F I C A T I O N S

**APPLICATION DATA**

Door Width: \_\_\_\_\_ ft. \_\_\_\_\_ in.  
 Door Height: \_\_\_\_\_ ft. \_\_\_\_\_ in.  
 Dock Height: \_\_\_\_\_ ft. \_\_\_\_\_ in.  
 Bumper Protection\*: \_\_\_\_\_ in.  
 (\*Includes bumper projection and any building wall/foundation offset or cantilever)

**TRUCKS AND TRAILERS SERVICED**

Width: \_\_\_\_\_ Max. \_\_\_\_\_ Min.  
 Height: \_\_\_\_\_ Max. \_\_\_\_\_ Min.  
 Length: \_\_\_\_\_ Max. \_\_\_\_\_ Min.  
 Hydraulic Tailgate:  Yes  No  
 Rear Step Section:  Yes  No  
 Tailgate/Step Section Size: In.  
 Yard Jockeys:  Yes  No



**QUANTITY \_\_\_\_\_**

**Model**  DSS  
**Head Pad Width** \_\_\_\_\_ (Total Inches)  
**Head Pad Back/Face**  12/12  18/18  24/24  12/15  12/18  Wearnmaster Head Pad  
**Drop Curtain**  None  12"  18"  24"  Velcro Strips  Full Width  
**Side Pad Height** \_\_\_\_\_ (Total Inches)  
**Side Pad Back/Face**  12/12  6/10  8/12  10/12  10/15  8/15  12/15  
 10/18  6/14

**Base Material**  22 oz. Vinyl  40 oz. Vinyl  16 oz. CSM  40 oz. CSM  TS-55®  
**Color**  Black  Tan  Brown  Blue  Green  
**Taper**  Tapered  Non-Tapered  
**Top Projection**  8"  10"  12"  14"  16"  18"  20"  22"  24"  
**Bottom Projection**  8"  10"  12"  14"  16"  18"  20"  22"  24"  
**Bottom Flaps**  None  3"  6"  Inside  Inside & Front  All 3 Sides  
**Blockout**  None  Top Projection \_\_\_\_\_"  Bottom Projection \_\_\_\_\_"  
**Wear Pleats**  None  WP4  WP8  WP16  Side Pads  Head Pad Corners  
**Material**  22 oz. Vinyl  40 oz. Vinyl  40 oz. CSM  TS-55®  
**Color**  Black  Tan  Brown  Blue  Green  
**Wear Face**  None  Head Pad  Side Pad  
**Material**  22 oz. Vinyl  40 oz. Vinyl  40 oz. CSM  TS-55®  
**Color**  Black  Tan  Brown  Blue  Green  
**Reinforced Inside Face**  Standard  Side Pad Full Height  
 22 oz. Vinyl  40 oz. Vinyl  40 oz. CSM  XL-100™  
 Black  Tan  Brown  Blue  Green

**Options**  Door Numbers  Flame Retardant Fabric & Foam  
 Flame Retardant Fabric Only  Flame Retardant Foam Only  
**Side Pad Mounting Brackets**  None  Flats & Angles  Angles  1 1/2" Offset Flats & Angles

\*Conversions: To convert measurements to metric, see formulas below:  
 Inches x 25.4 = millimeters (Example: 4" x 25.4 = 101.6 mm)  
 Feet x .3048 = meters (Example: 12' x .3048 = 3.66 m)

