



FOAM DOCK SEAL WITH ADJUSTABLE HEAD PAD

D S A S E R I E S S P E C I F I C A T I O N S



Design Highlights

- Adjustable Head Pad System Has 48" Working Range To Accommodate Varying Truck Heights
- 18" High Foam Head Pad is Mounted on 10 ga. Formed, Painted Steel Which Travels in Slide Tracks
- Adjustable Spring-Tension System Provides for Adjustment of Counterbalance and Horizontal Tilt for Smooth, Jam-Free Operation
- Endurance-Tested Foam Core is Continuously Bonded to Frame Surface with Flexible, Nonflammable Adhesive.
- Roll-formed galvanized steel framing reduces pressure on building wall
- A Wide Selection of Durable Coated Fabrics Provide Maximum Durability
- Highly Resilient, Open-Celled Polyurethane Foam Keeps Original Shape and Compresses Easily to Extend Seal Life
- Side Pad Bottoms are Tapered to Avoid Pinching and Wear
- All Pads are Vented for Air and Moisture Release
- Full Length Yellow Stripes Guide Drivers to the Dock
- Heavy-Duty, Galvanized Steel Mounting Brackets Included

Project Information

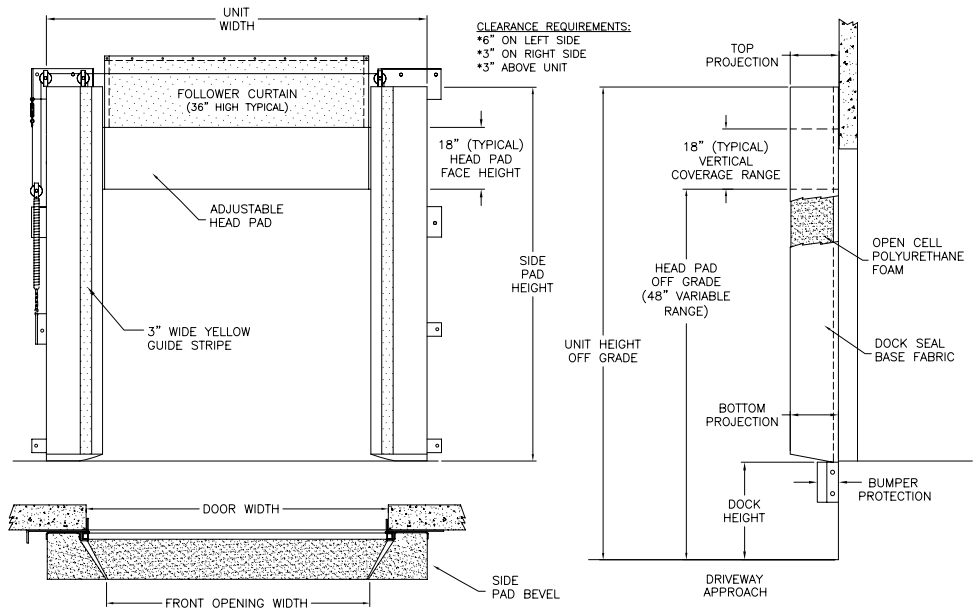
Job Name _____
 Address _____
 General Contractor _____
 Distributor _____
 Quantity _____

Certified For Construction

By _____
 Company _____
 Address _____
 Date _____



FOAM DOCK SEAL WITH ADJUSTABLE HEAD PAD SPECIFICATIONS



APPLICATION DATA

Door Width: _____ ft. _____ in.
 Door Height: _____ ft. _____ in.
 Dock Height: _____ ft. _____ in.
 Bumper Protection*: _____ in.
 (*Includes bumper projection and any building wall/
 foundation offset or cantilever)

TRUCKS AND TRAILERS SERVICED

Width: _____ Max. _____ Min.
 Height: _____ Max. _____ Min.
 Length: _____ Max. _____ Min.
 Hydraulic Tailgate: Yes No
 Rear Step Section: Yes No
 Tailgate/Step Section Size: _____ In.
 Yard Jockeys: Yes No

QUANTITY _____

Model DSA

Distance to Outside of Side Pads _____ (Total Inches)

Side Pad Height _____ (Total Inches)

Side Pad Bevel 12/12 6/10 8/12 10/15 8/15 12/15 10/18 6/14

Head Pad Bevel 18/18

Base Material 22 oz. Vinyl 40 oz. Vinyl 16 oz. CSM 40 oz. CSM TS-55®

Color Black Tan Brown Blue Green

Taper Tapered Non-Tapered

Top Projection 8" 10" 12" 14" 16" 18" 20" 22" 24"

Bottom Projection 8" 10" 12" 14" 16" 18" 20" 22" 24"

Bottom Flaps None 3" 6" Inside Inside & Front All 3 Sides

Wear Surface None Wear Face Reinforced Inside Face Side Pad 4"

Side Pad Head Pad

Material 22 oz. Vinyl 40 oz. Vinyl 40 oz. CSM TS-55®

Color Black Tan Brown Blue Green

Wear Pleats None WP4 WP8 WP16 Side Pads

Material 22 oz. Vinyl 40 oz. Vinyl 40 oz. CSM TS-55®

Color Black Tan Brown Blue Green

Options Door Numbers

Flame Retardant Fabric & Foam

Flame Retardant Fabric Only Flame Retardant Foam Only

Side Pad Mounting Brackets None Flats & Angles Angles

1 1/2" Offsets & Angles

*Conversions: To convert measurements to metric, see formulas below:

Inches x 25.4 = millimeters (Example: 4" x 25.4 = 101.6 mm)

Feet x .3048 = meters (Example: 12' x .3048 = 3.66 m)

